

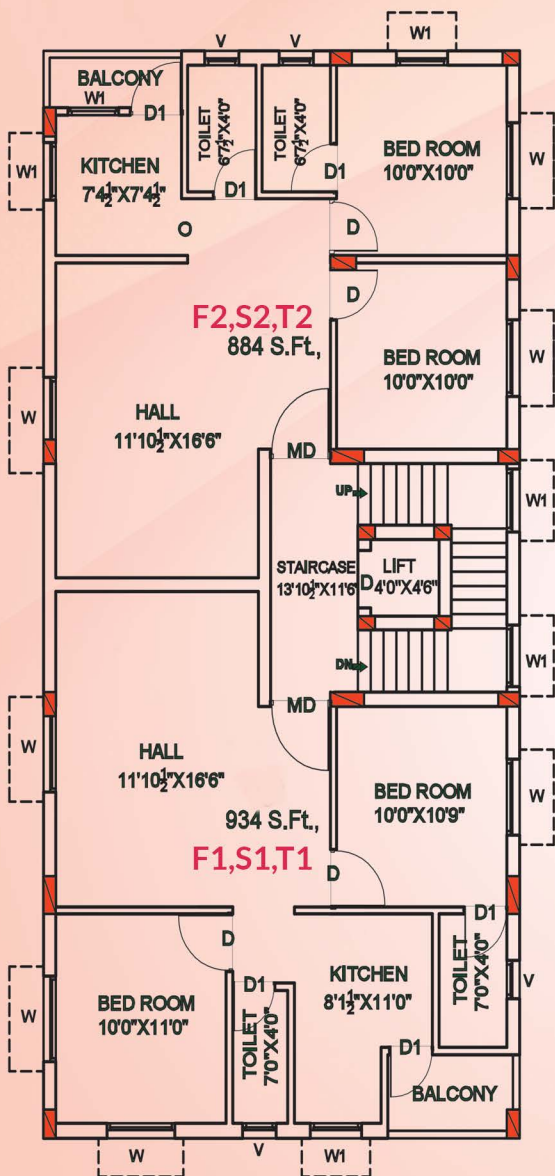
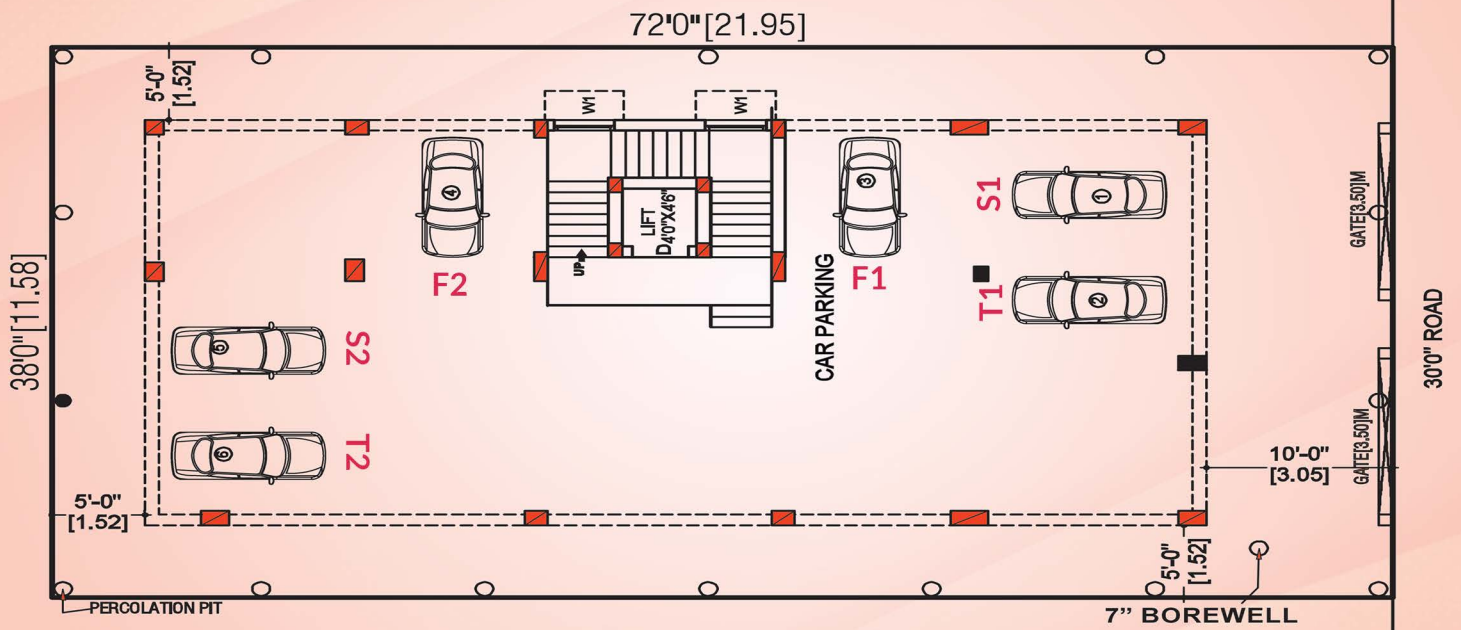
@The Heart of Porur

EXTRAVAGANCE
2BHK APARTMENTS



i5 **AVA PALACE**

GROUND FLOOR PLAN



FLOOR PLAN

FLOOR PLAN

- F1, S1 & T1 = 934sq.ft
- F2, S2 & T2 = 884sq.ft

NOTE:

Closed Car Parking area is provided individually for each.

i5 **AVA PALACE**

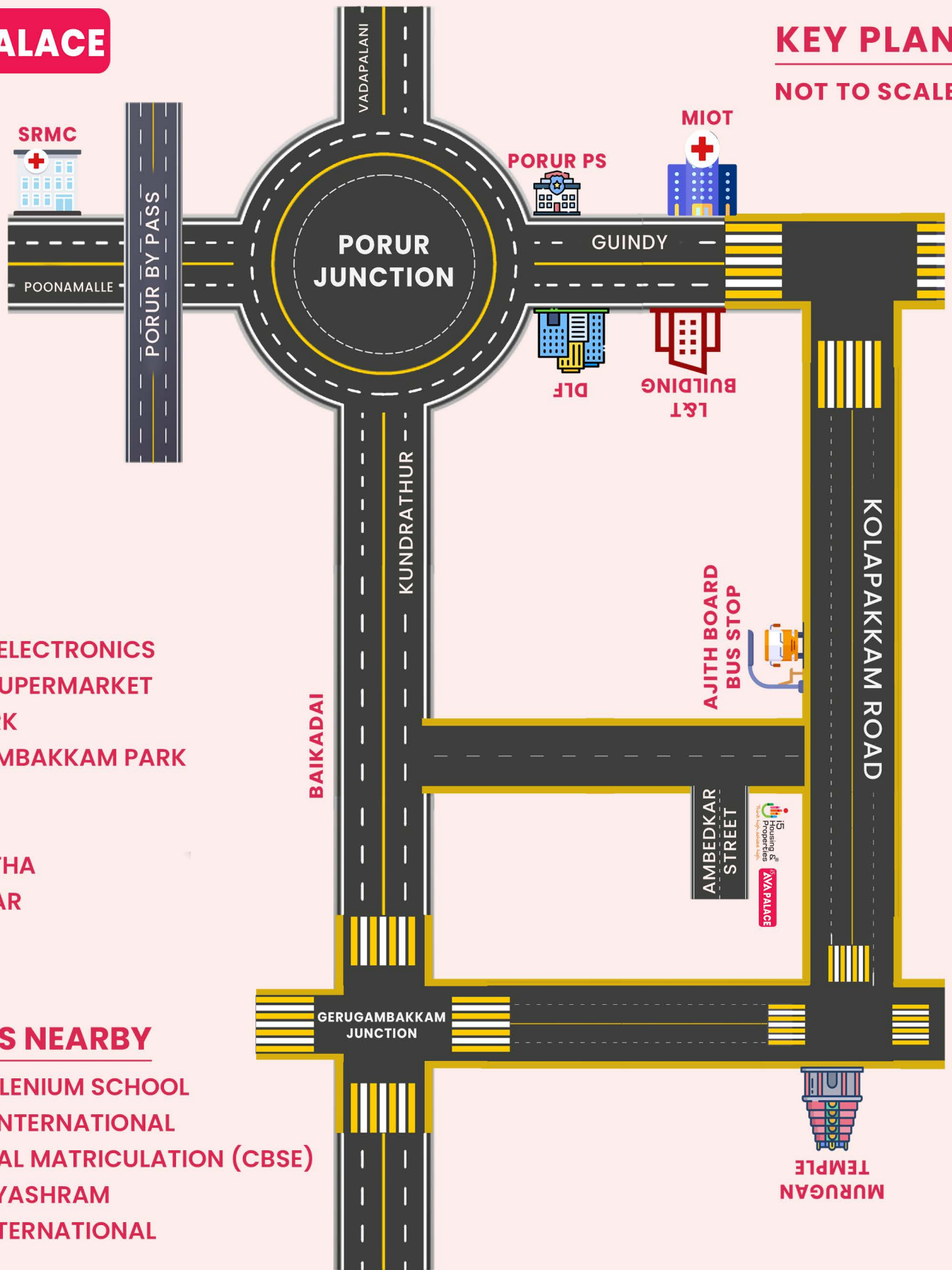
i5 Housing & Properties
Think high achieve high

SPECIFICATION

i5 **AVA PALACE**

RCC Framed Structured

- Walls
 - Internal : 4½" Thick Brick Work in cm 1:5
 - External : 9" Thick Brick Work in cm 1:6
- Plastering
 - Ceiling : in cm 1:3 - 10mm thick
 - Internal : in cm 1:5 - 12mm thick
 - External : in cm 1:6 - 20mm thick
- Doors - Main Door Teak Wood, Other Country Wood
- Windows - UPVC Frames with Safety Grills
- Flooring - 2'X2' Vitrified Tiles
- Kitchen - Granite Top with SS Sink
- Toilets - Doing ceramic tiles upto 7' Height
- Electrical - 3Phase Power with inverter provision concealed with conduits morden switches
- Painting - Interior & Exterior Emulsion
- Terrace - Weathering Course with Pressing Tiles
- Compound wall 4.5' high all around
- Gate - Mild Steel ventilated gate with corrosion coated emulsion.
- Car Parking - Closed Car Parking is provided.



NEARBY

- SATHYA ELECTRONICS
- GRACE SUPERMARKET
- KIDS PARK
- GERUGAMBAKKAM PARK
- CROMA
- KFC
- SANGEETHA
- ANJAPPAR

SCHOOLS NEARBY

- PSSB MILLENIUM SCHOOL
- OMEGA INTERNATIONAL
- VELAMMAL MATRICULATION (CBSE)
- PON VIDYASHRAM
- KRISH INTERNATIONAL

SITE ADDRESS

Ambedkar Street, B.T Nagar,
Near Ajith Board Bus Stop,
Gerugambakkam,
Chennai - 600 128.

OFFICE ADDRESS

NO.4, 3rd Floor,
Pushpa Nagar Main Road,
Iyappanthangal,
Chennai - 600 056.

Call : 044 4958 4488 | 766 700 5000 | www.i5housing.com